

Establishing the Sandspit Carpark Advisory Group

To: Rodney Local Board
From: Kawau Island Resident and Ratepayers Association (KIRRA) and Sandspit Resident and Ratepayers Association (SRRA)
Date: 14 May 2023

Whakarāpopototanga matua

Executive summary

1. This paper seeks to inform on the establishment of the Sandspit Carpark Advisory Group (SCAG) for the area designated as Allotment 340, being the carpark and wharf area located at Sandspit (the Area).
2. The requirement for SCAG was identified by the Kawau Island and Sandspit communities, with their respective resident and ratepayer associations (KIRRA & SRRA) working collaboratively to establish this group so that it can:
 - a. Enable an informed community through providing a conduit between Council decision making processes and the community
 - b. Facilitate the identification and provision of a community view
 - c. Support the local board in informed decision making through providing a collated community view for consideration.
3. Guidance is sought from the Rodney Local Board as to:
 - a. the appropriateness of extending CAG membership as outlined in the Terms of Reference, and
 - b. whether there is a willingness to or requirement from the Local Board to formally recognise this group.

Ngā tūtohunga

Recommendations

That the Rodney Local Board:

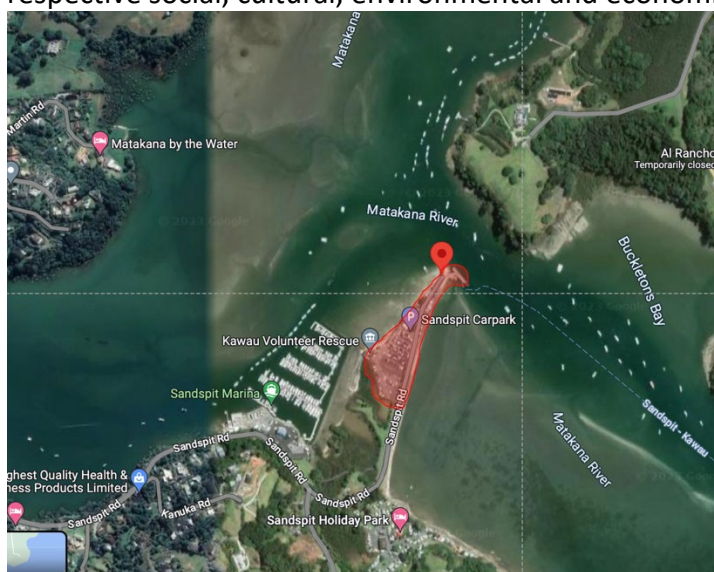
1. **Receive** this proposal
2. **Support** this group to succeed, through providing information to and receiving feedback from SCAG
3. **Confirm** any alterations that may be required to this proposal, to enable this group to be formally recognised as an advisory group by the RLB
4. **Advise** on the appropriateness of a member from the Rodney Local Board to chair this group, naming an appropriate person.

Horopaki

Context

KIRRA represents the 300 residents and ratepayers of Kawau Island, sharing information through emails, a quarterly newsletter and a private Facebook group with 1400 members. SRRRA represents the 430 households of Sandspit, sharing information through emails and several facegroup groups, including the Sandspit, Snells, Algies and Mahurangi East public Facebook group which has 9000 followers.

The communities of Kawau Island and Sandspit are reliant on the carpark and wharf areas at Sandspit (indicated red in the below image, and hereafter referred to as the Area) for the respective social, cultural, environmental and economic values of each community.



Recognising the pressures on this area, considerable work has been undertaken over the past six months to enable effective working relationships between KIRRA and SRRRA. We acknowledge collaboration was not previously achievable, however progression within both organisations has enabled a collaborative, open and trusted working relationship. This does not mean we will always be in agreement, but it does mean we are able to discuss and agree priorities and actions that will protect and enhance the values of the Area, compromising where appropriate or providing clarity on trade-offs as required.

To facilitate these discussions, the Sandspit Carpark Advisory Group is being formed. Membership includes representation of all relevant parties for the Area and we have created a Terms of Reference, Role descriptions and a Code of Conduct, all of which are attached to this paper.

In establishing this group, we acknowledge the support and advice received from Council officers, who have reviewed the paperwork and expressed support of this group, recognising the work already achieved in making this collaborative, community-centred approach feasible.

It is not the intention of SCAG to replace formal council engagement processes. SCAG is a conduit that will facilitate more effective and efficient gaining of community views, educating our communities on trade-offs and actions required of them, and improving the feedback provided to council. SCAG will also enable our communities to pool resources and cooperate on community-led activities where appropriate.

Ngā ritenga ā-pūtea

Financial implications

There are no financial implications as no budget is required for this proposal

Ngā koringa ā-muri

Next Steps

1. We have begun filling the roles, ahead of an inaugural meeting in early June.
2. We would like RLB to advise of any adjustments to the attached, any alternative process that may be required and any preferred reporting processes/requirements

Ngā tāpirihanga

Attachments

- SCAG Terms of Reference

Ngā kaihaina

Signatories

Name	Title	Contact
Pippa Tabron	Chair, Kawau Island Resident and Ratepayers Association	pippa@tabron.com ph 027 534 7225
Peter Deane	Chair, Sandspit Resident and Ratepayers Association	peter@deanect.nz ph 027 252 6121

For working discussions on this paper, or SCAG please contact:

Sue-Ellen Craig	Committee member, Kawau Island Resident and Ratepayers Association	Emailsueellencraig@gmail.com Ph 021 577 685
Laurie Lowther	Committee member, Sandspit Resident and Ratepayers Association	laurie@lowtherfamily.co.nz ph 021 771 143